



Company Registration Number: 196300098Z

Sembcorp Marine completes integrated fixed platform topsides for high-pressure, high-temperature Culzean gas field in the UK North Sea

Well Head, Utilities & Living Quarters as well as Central Processing Facility topsides will head for the Culzean field, as part of Sembcorp Marine's comprehensive engineering solutions for French oil supermajor TOTAL and partners.

Singapore, May 22, 2018 – Three fixed platform topsides, newly completed at Sembcorp Marine Admiralty Yard for French oil supermajor TOTAL, are destined for the High Pressure-High Temperature (HPHT) Culzean gas field in the UK North Sea.

Comprising Well Head, Utilities & Living Quarters as well as Central Processing Facility, the approximately 30,000-tonne integrated topsides will handle up to 500 million standard cubic feet per day (MMSCFD) of gas and 25,000 barrels per day (bpd) of condensate.

The topsides comply fully with UK safety regulations for harsh-environment operations in the Culzean field, which TOTAL operates and co-owns with joint-venture partners BP and JX Nippon.

Sembcorp Marine President & CEO Wong Weng Sun said the successful completion of the Culzean topsides strengthened the Group's track record of satisfying the world's most demanding oil and gas field requirements.

He said, "The Culzean fixed platform topsides showcase our ability to deliver safe and reliable engineering solutions for HPHT field operating conditions. I am proud of the Sembcorp Marine team for stepping up to the plate as we take on more challenging and sophisticated offshore projects. Most of all, I sincerely thank TOTAL for the opportunities to contribute to the Culzean field development."

Jean-luc Guiziou, Managing Director, TOTAL E&P UK, said: "We are delighted to be here to celebrate the completion of the topsides which have been delivered by Sembcorp Marine and their partners on time, on budget and safely. We still have much to achieve between now and first gas in 2019, but the work carried out to date has set us up well for the remainder of this significant project."

The three Culzean topsides were constructed at the Sembcorp Marine Admiralty Yard over 32 months. The Well Head Platform and Central Processing Facility left Singapore for the Culzean field in early May; the Utilities & Living Quarters will leave very soon. In addition, a power generation module and two interconnecting bridges,

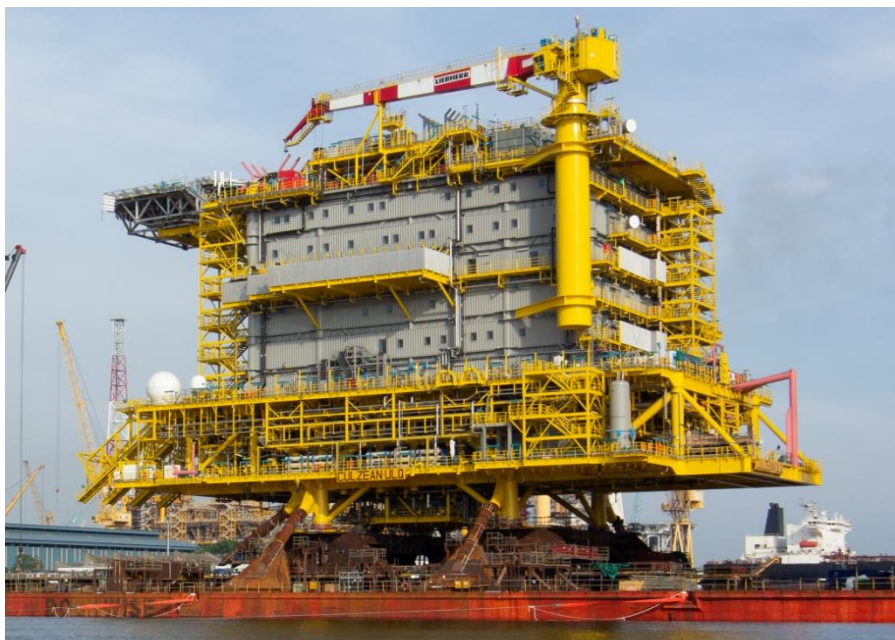
which form part of the integrated topsides, were separately completed at Sembcorp Marine subsidiary Sembmarine SLP in Lowestoft, UK, for delivery in June.

The fixed platform topsides join Floating Storage and Offloading vessel FSO Ailsa and high-specification jack-up rig Maersk Highlander in a comprehensive suite of Sembcorp Marine engineering solutions for the Culzean field.

Recently delivered to floating production specialist MODEC, FSO Ailsa will also leave shortly for the Culzean field; while Maersk Highlander, completed in 2016, is already deployed there.

Notes to Editors

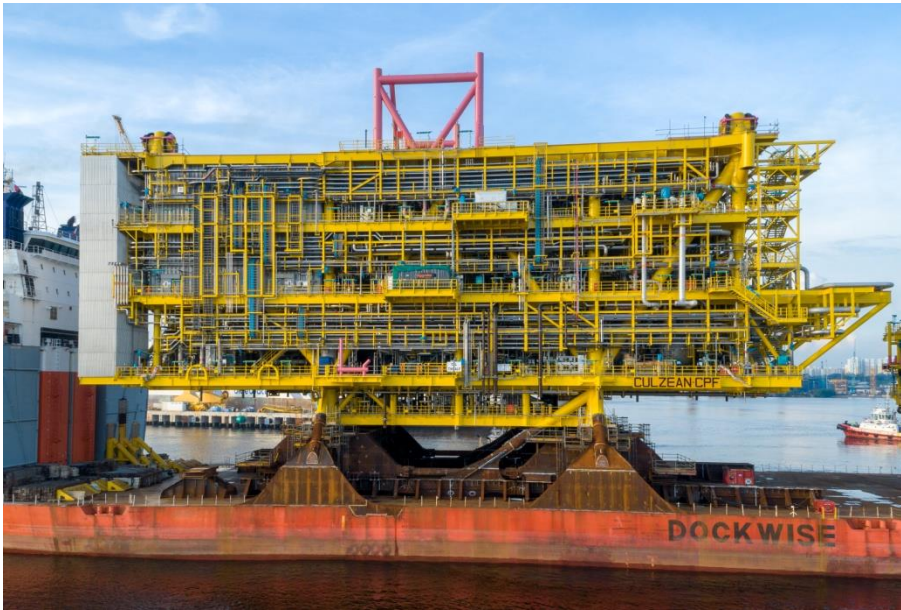
Click [here](#) to download high-resolution images accompanying this press release.



Utilities & Living Quarters Fixed Platform Topside



Well Head Fixed Platform Topside



Central Processing Facility Fixed Platform Topside

About Sembcorp Marine

Sembcorp Marine provides innovative engineering solutions to the global offshore, marine and energy industries, drawing upon more than 50 years of track record. We focus on four key capabilities, namely, Rigs & Floaters; Repairs & Upgrades; Offshore Platforms; and Specialised Shipbuilding.

Our customers include major oil companies, drilling contractors, shipping companies as well as owners and operators of floating production units.

We own and operate shipyards strategically located in Singapore, Indonesia, the United Kingdom and Brazil.

Discover more at www.sembmarine.com.

For media enquiries, please contact:

Annie Sng

Manager, Corporate Communications

Phone: 6262 8344

Email: puaytian.sng@sembmarine.com